

RIVERWALK CROSSING

300 - 1100 RIVERWALK | JENKS, OK 74037



RETAIL SPACE

Base \$16.00 + NNN

BUILDING 400

2,829 SF SUITE 160

5,843 SF SUITE 180

1,015 SF SUITE 210

440 SF SUITE 240

BUILDING 500

1,401 SF SUITE 120

1,401 SF SUITE 150

1,401 SF SUITE 155

OFFICE SPACE

Base \$14.00 + NNN

BUILDING 1100

13,387 SF SUITE 100

SITE FEATURES:

1,300 Parking

After Hours Security

Local On-Site Management

Prime Location at

Jenks Riverwalk District

Daytime Population 2

2,851 (3 Mi. Radius)

JOIN

GOLF SUITES | STATE FARM | BURN CO | BURN BOOTCAMP | MARBLE SLAB CREAMERY | PEDEGO | ANDOLINIS |
BRAMBLE | MELTING POT | PINOT'S PALETTE | AFLAC | LOS CABOS | SHIELD LAW GROUP | SPRING DENTAL

FOR MORE INFORMATION:

Matt Mardis
Principal, Paine & Associates
918-481-5380 ext.13
matt@paine-associates.com

Garrett Mahaney
Partner, Paine & Associates
918-481-5380 ext.11
garrett@paine-associates.com

Brian Paine
Principal, Paine & Associates
918-481-5380 ext.12
brian@paine-associates.com



PAINE

COMMERCIAL REAL ESTATE

paine-associates.com

RIVERWALK CROSSING

300 - 1100 RIVERWALK | JENKS, OK 74037

Located in the heart of The River District,

Riverwalk Crossing is South Tulsa's first major lifestyle center and inaugural riverfront development.

This mixed-use hub connects to the:

- highly anticipated Simon Outlet Mall (under construction)
- Oklahoma Aquarium
- Tulsa Riverparks Trail System
- Jenks High School
- RiverSpirit Casino
- the thriving 96th Street and Riverside Drive area.

JENKS DEMOGRAPHICS

Population (2019)	96th Street	Creek Tpk	Riverside Dr
5 Minutes	14,416	9,754	19,085
10 Minutes	102,942	124,532	128,075
15 Minutes	298,751	337,045	331,809
Average HH Income (2019)			
5 Minutes	\$83,034	\$108,336	\$93,285
10 Minutes	\$98,869	\$100,897	\$97,018
15 Minutes	\$88,208	\$84,361	\$87,421
Age (2019)			
Average Age	39 yrs. old		
Traffic Counts (2017)			
	18,800	35,200	30,900

Jenks is a thriving business community. Jenks boasts an excellent tax base, outstanding school district, quality homes, redeveloped River front, and is a prime location within the Tulsa metropolitan area. Companies including, Kimberly Clark, Green Country Energy, and Tulsa Winch and Cogentrix, make Jenks a great place to live, work and do business.

Jenks is named the "Antique Capital of Oklahoma." Enjoy visiting the historic charm of downtown Jenks with its wonderful brick architecture and its bustling antique and arts district.



A GLANCE AT JENKS

"Jenks is one of America's Best Places to Live"
---Money Magazine.

FOR MORE INFORMATION:

Matt Mardis
Principal, Paine & Associates
918-481-5380 ext.13
matt@paine-associates.com

Garrett Mahaney
Partner, Paine & Associates
918-481-5380 ext.11
garrett@paine-associates.com

Brian Paine
Principal, Paine & Associates
918-481-5380 ext.12
brian@paine-associates.com



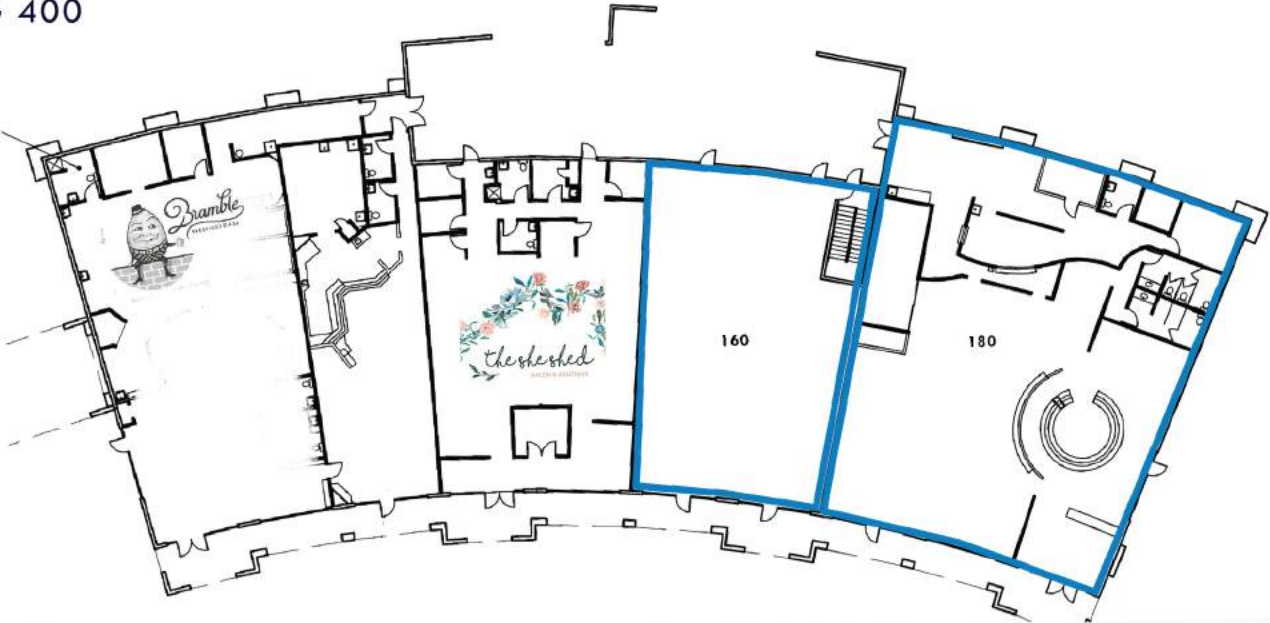
RIVERWALK CROSSING

300 - 1100 RIVERWALK | JENKS, OK 74037

BUILDING 400

2,820 SF
SUITE 160

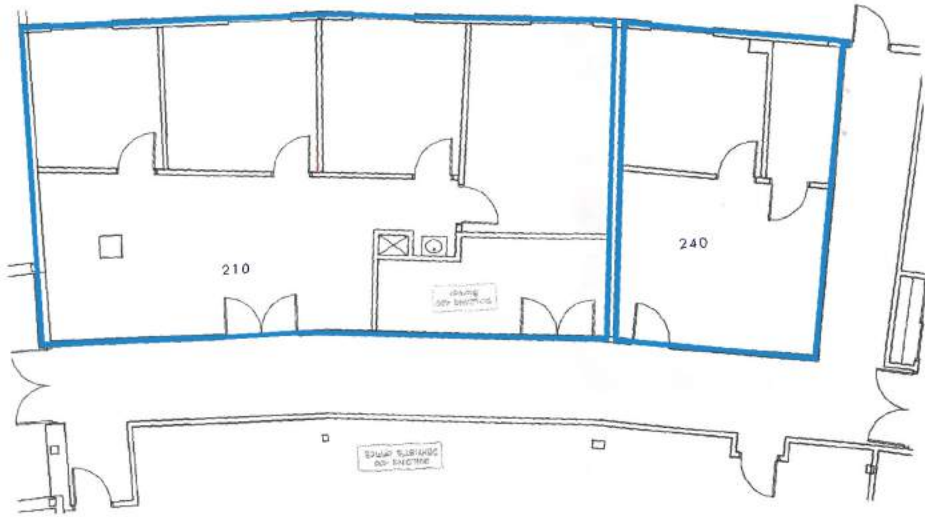
5,843 SF
SUITE 180



BUILDING 400

1,015 SF
SUITE 210

440 SF
SUITE 240



BLDG 400

FOR MORE INFORMATION:

Matt Mardis
Principal, Paine & Associates
918-481-5380 ext.13
matt@paine-associates.com

Garrett Mahaney
Partner, Paine & Associates
918-481-5380 ext.11
garrett@paine-associates.com

Brian Paine
Principal, Paine & Associates
918-481-5380 ext.12
brian@paine-associates.com



P A I N E

COMMERCIAL REAL ESTATE

paine-associates.com

RIVERWALK CROSSING

300 - 1100 RIVERWALK | JENKS, OK 74037

BUILDING 500

1,401 SF

SUITE 120, 150 & 155



BLDG 500

FOR MORE INFORMATION:

Matt Mardis
Principal, Paine & Associates
918-481-5380 ext.13
matt@paine-associates.com

Garrett Mahaney
Partner, Paine & Associates
918-481-5380 ext.11
garrett@paine-associates.com

Brian Paine
Principal, Paine & Associates
918-481-5380 ext.12
brian@paine-associates.com

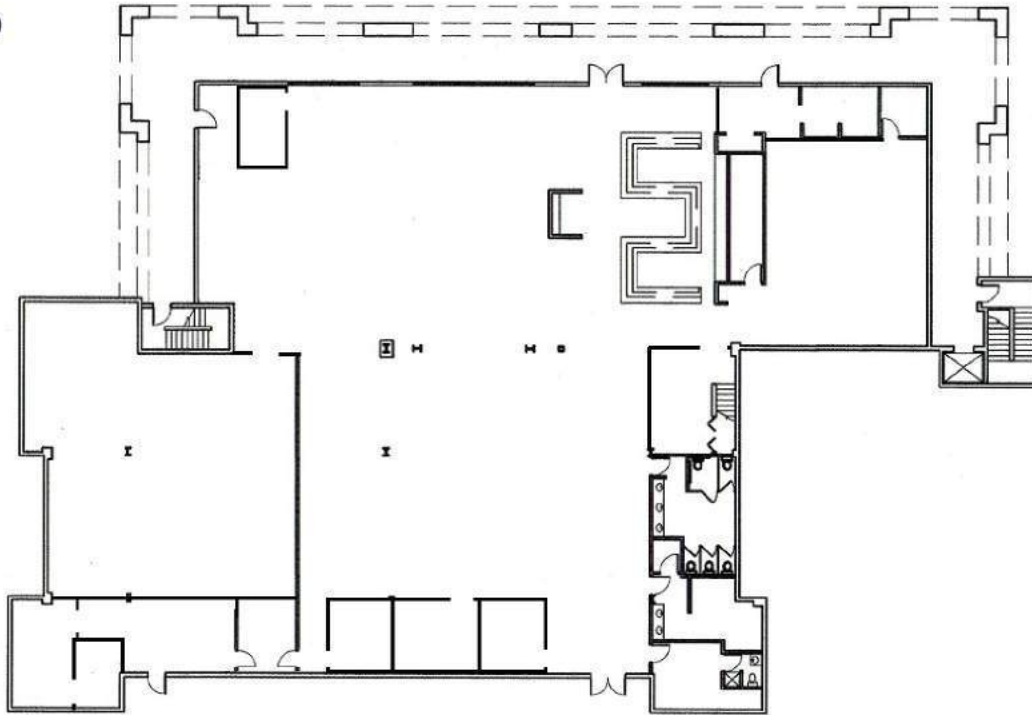

P A I N E
COMMERCIAL REAL ESTATE
paine-associates.com

RIVERWALK CROSSING

300 - 1100 RIVERWALK | JENKS, OK 74037

BUILDING 1100

13,387 SF
SUITE 100



BLDG 1100 SUITE 100

FOR MORE INFORMATION:

Matt Mardis
Principal, Paine & Associates
918-481-5380 ext.13
matt@paine-associates.com

Garrett Mahaney
Partner, Paine & Associates
918-481-5380 ext.11
garrett@paine-associates.com

Brian Paine
Principal, Paine & Associates
918-481-5380 ext.12
brian@paine-associates.com


P A I N E
COMMERCIAL REAL ESTATE
paine-associates.com

RIVERWALK CROSSING

300 - 1100 RIVERWALK | JENKS, OK 74037



BLDG 300
SECOND FLOOR

BLDG 400
SECOND FLOOR



BLDG 600



BLDG 1000
SECOND FLOOR

BLDG 1100
SECOND FLOOR



BLDG 300
FIRST FLOOR

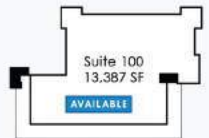
BLDG 400
FIRST FLOOR



BLDG 500



BLDG 1000
FIRST FLOOR



BLDG 1100
FIRST FLOOR



SITE PLAN OVERVIEW

FOR MORE INFORMATION:

Matt Mardis
Principal, Paine & Associates
918-481-5380 ext.13
matt@paine-associates.com

Garrett Mahaney
Partner, Paine & Associates
918-481-5380 ext.11
garrett@paine-associates.com

Brian Paine
Principal, Paine & Associates
918-481-5380 ext.12
brian@paine-associates.com



RIVERWALK CROSSING

300 - 1100 RIVERWALK | JENKS, OK 74037



AERIAL

FOR MORE INFORMATION:

Matt Mardis
Principal, Paine & Associates
918-481-5380 ext.13
matt@paine-associates.com

Garrett Mahaney
Partner, Paine & Associates
918-481-5380 ext.11
garrett@paine-associates.com

Brian Paine
Principal, Paine & Associates
918-481-5380 ext.12
brian@paine-associates.com



RIVERWALK CROSSING

300 - 1100 RIVERWALK | JENKS, OK 74037



GOLF SUITES

FOR MORE INFORMATION:

Matt Mardis
Principal, Paine & Associates
918-481-5380 ext.13
matt@paine-associates.com

Garrett Mahaney
Partner, Paine & Associates
918-481-5380 ext.11
garrett@paine-associates.com

Brian Paine
Principal, Paine & Associates
918-481-5380 ext.12
brian@paine-associates.com


P A I N E
COMMERCIAL REAL ESTATE
paine-associates.com