

# THE SHOPS AT BROOKOVER CORNER

## RETAIL SPACE FOR LEASE

NE CORNER 151ST & HIGHWAY 75 | GLENPOOL, OKLAHOMA

**10,754 SF**

TOTAL LEASABLE AREA

**Est. Delivery 2022**



**58,630 TOTAL CPD**

US HWY 75 and 151st ST S.



**BROOKOVER  
CORNER**

**RENT \$25-27 PSF  
\$4.50 NNN**

**LOCATED AT GLENPOOL'S NEWEST  
MIXED USE CORRIDOR**

# OVERVIEW



**OUTSTANDING VISIBILITY  
AND LOCATION NEAR:**

Glenpool Public Schools  
Saint Francis Health System

**FOR MORE INFORMATION:**

Matt Mardis  
Principal, Paine & Associates  
918-481-5380 ext.13  
matt@paine-associates.com

Garrett Mahaney  
Partner, Paine & Associates  
918-481-5380 ext.11  
garrett@paine-associates.com

Brian Paine  
Principal, Paine & Associates  
918-481-5380 ext.12  
brian@paine-associates.com



# PAINE

COMMERCIAL REAL ESTATE

paine-associates.com

NE CORNER 151ST & HIGHWAY 75 | GLENPOOL, OKLAHOMA

① FIRST FLOOR PLAN  
1/8" = 1'-0"

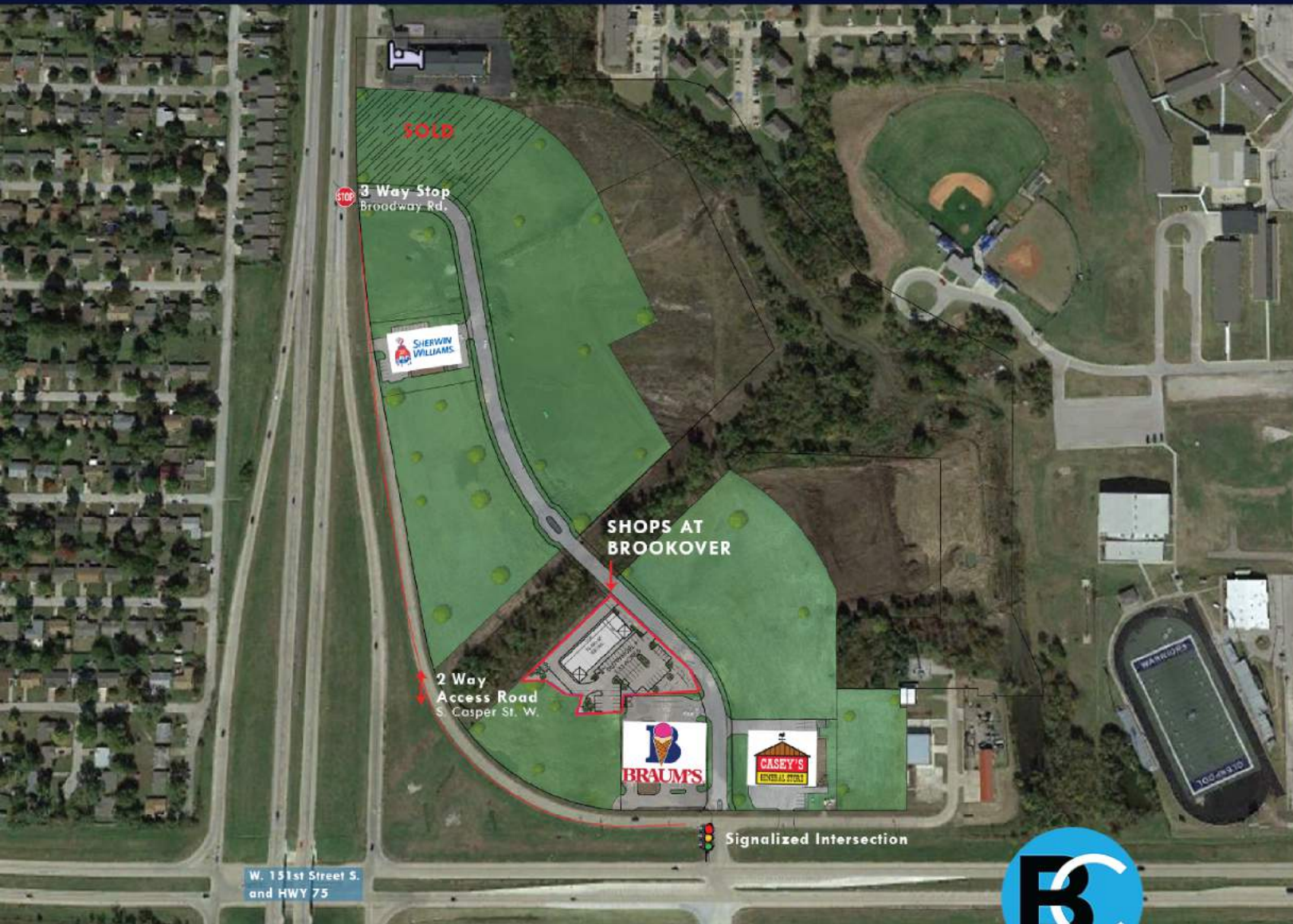
paine-associates.com



# THE SHOPS AT BROOKOVER CORNER

## RETAIL SPACE FOR LEASE

NE CORNER 151ST & HIGHWAY 75 | GLENPOOL, OKLAHOMA



**BROOKOVER  
CORNER**

## SITE PLAN

### FOR MORE INFORMATION:

Matt Mardis  
Principal, Paine & Associates  
918-481-5380 ext.13  
matt@paine-associates.com

Garrett Mahaney  
Partner, Paine & Associates  
918-481-5380 ext.11  
garrett@paine-associates.com

Brian Paine  
Principal, Paine & Associates  
918-481-5380 ext.12  
brian@paine-associates.com



# PAINE

COMMERCIAL REAL ESTATE

paine-associates.com



# THE SHOPS AT BROOKOVER CORNER

## RETAIL SPACE FOR LEASE

NE CORNER 151ST & HIGHWAY 75 | GLENPOOL, OKLAHOMA



# AERIAL



**BROOKOVER  
CORNER**

### FOR MORE INFORMATION:

Matt Mardis  
Principal, Paine & Associates  
918-481-5380 ext.13  
[matt@paine-associates.com](mailto:matt@paine-associates.com)

Garrett Mahaney  
Partner, Paine & Associates  
918-481-5380 ext.11  
[garrett@paine-associates.com](mailto:garrett@paine-associates.com)

Brian Paine  
Principal, Paine & Associates  
918-481-5380 ext.12  
[brian@paine-associates.com](mailto:brian@paine-associates.com)



# PAINE

COMMERCIAL REAL ESTATE

[paine-associates.com](http://paine-associates.com)