



GRC PARK

OVERVIEW

CLASS "A" OFFICE SPACE FOR LEASE | GRC I

8801 S. Yale Ave. | Tulsa, Oklahoma 74137

PROPERTY FEATURES

- Park Like Campus
- 12 Picturesque Acres
- 3 Story Structured Parking

BUILDING AMENITIES

- Excellent Walkability to Upscale Restaurants + Services
- Walking Trails
- Shared Conferene Room for Tenants
- Secure Underground Storage
- Professional Management (On-Site)
- Property Improvements on GRC I

CONVENIENT ACCESS to
CREEK TURNPIKE and S. Yale Ave.

152,893 GLA

\$22.50 FULL SERVICE GROSS



1,562 SF - 5,014 SF GRC I

FOR MORE INFORMATION:

Matt Mardis
Principal, Paine & Associates
918-481-5380 ext.13
matt@paine-associates.com

Phillips Brackinridge
Associate, Paine & Associates
918-629-6489
phillips@paine-associates.com

Brian Paine
Principal, Paine & Associates
918-481-5380 ext.12
brian@paine-associates.com


PAINE
COMMERCIAL REAL ESTATE
paine-associates.com



GRC PARK

AT THE PARK

CLASS "A" OFFICE SPACE FOR LEASE | GRC I

8801 S. Yale Ave. | Tulsa, Oklahoma 74137



GRC Park LLC is superbly situated on 12 park like acres which include a pond and beautiful landscaping. The campus features two Class "A" office buildings and 3 story structured parking, totalling 175,090 SF. In addition to the picturesque setting, GRC Park is located within convenient walking distance to a variety of restaurants and services; noted include CVS, Cycle Bar, Quik Trip, Whole Foods, Starbucks, Keo, QDoba, Yokozuna, and Upper Crust.



FOR MORE INFORMATION:

Matt Mardis
Principal, Paine & Associates
918-481-5380 ext.13
matt@paine-associates.com

Phillips Breckinridge
Associate, Paine & Associates
918-629-6489
phillips@paine-associates.com

Brian Paine
Principal, Paine & Associates
918-481-5380 ext.12
brian@paine-associates.com


PAINE
COMMERCIAL REAL ESTATE
paine-associates.com



GRC PARK

AERIAL

CLASS "A" OFFICE SPACE FOR LEASE | GRC I

8801 S. Yale Ave. | Tulsa, Oklahoma 74137



FOR MORE INFORMATION:

Matt Mardis
Principal, Paine & Associates
918-481-5380 ext.13
matt@paine-associates.com

Phillips Breckinridge
Associate, Paine & Associates
918-629-6489
phillips@paine-associates.com

Brian Paine
Principal, Paine & Associates
918-481-5380 ext.12
brian@paine-associates.com





GRC PARK

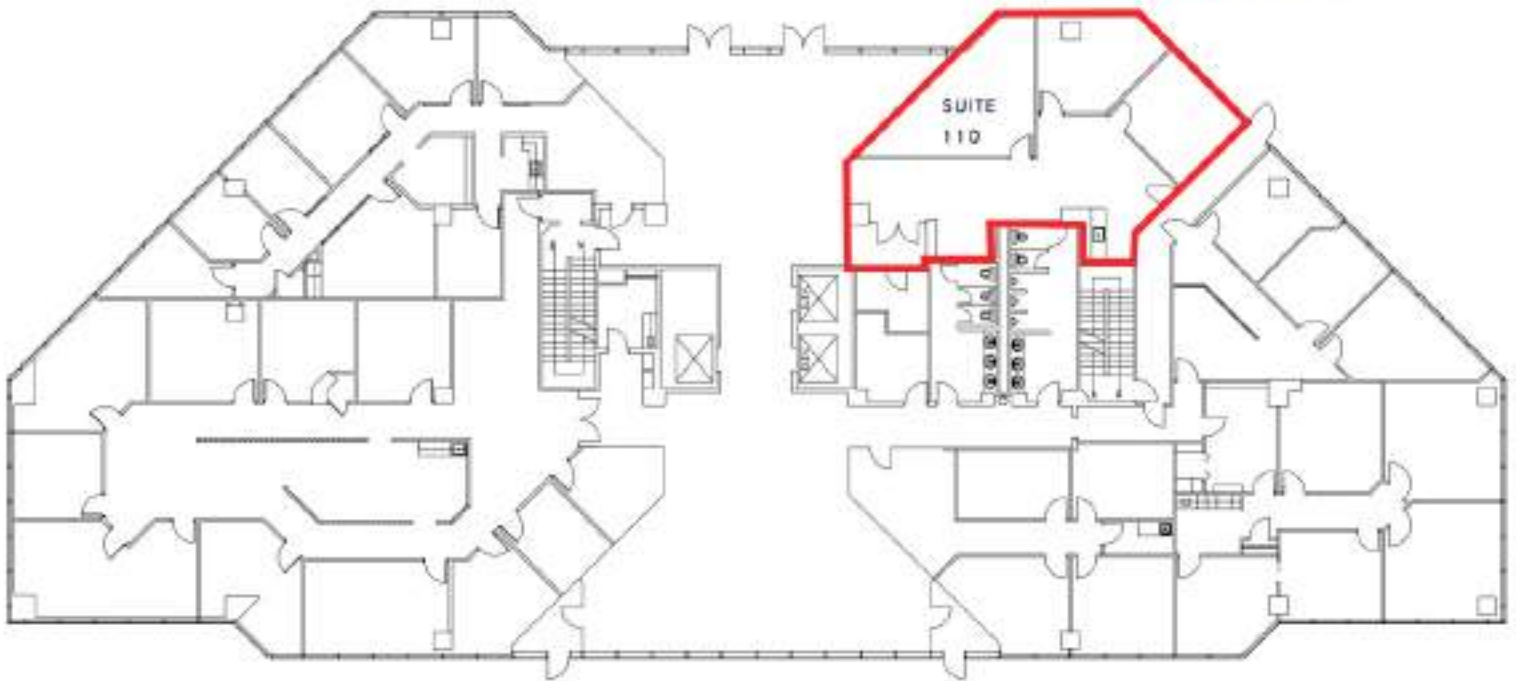
FLOOR PLANS

CLASS "A" OFFICE SPACE FOR LEASE | GRC I

8801 S. Yale Ave. | Tulsa, Oklahoma 74137

1ST
FLOOR

SUITE 110
1,572 SF AVAILABLE



FOR MORE INFORMATION:

Matt Mardis
Principal, Paine & Associates
918-481-5380 ext.13
matt@paine-associates.com

Phillips Breckinridge
Associate, Paine & Associates
918-629-6489
phillips@paine-associates.com

Brian Paine
Principal, Paine & Associates
918-481-5380 ext.12
brian@paine-associates.com



PAINE

COMMERCIAL REAL ESTATE

paine-associates.com



GRC PARK

FLOOR PLANS

CLASS "A" OFFICE SPACE FOR LEASE | GRC I

8801 S. Yale Ave. | Tulsa, Oklahoma 74137

2ND
FLOOR



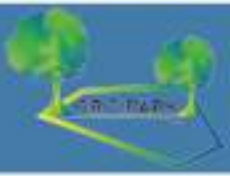
FOR MORE INFORMATION:

Matt Mardis
Principal, Paine & Associates
918-481-5380 ext.13
matt@paine-associates.com

Phillips Brockinridge
Associate, Paine & Associates
918-629-6489
phillips@paine-associates.com

Brian Paine
Principal, Paine & Associates
918-481-5380 ext.12
brian@paine-associates.com


PAINE
COMMERCIAL REAL ESTATE
paine-associates.com



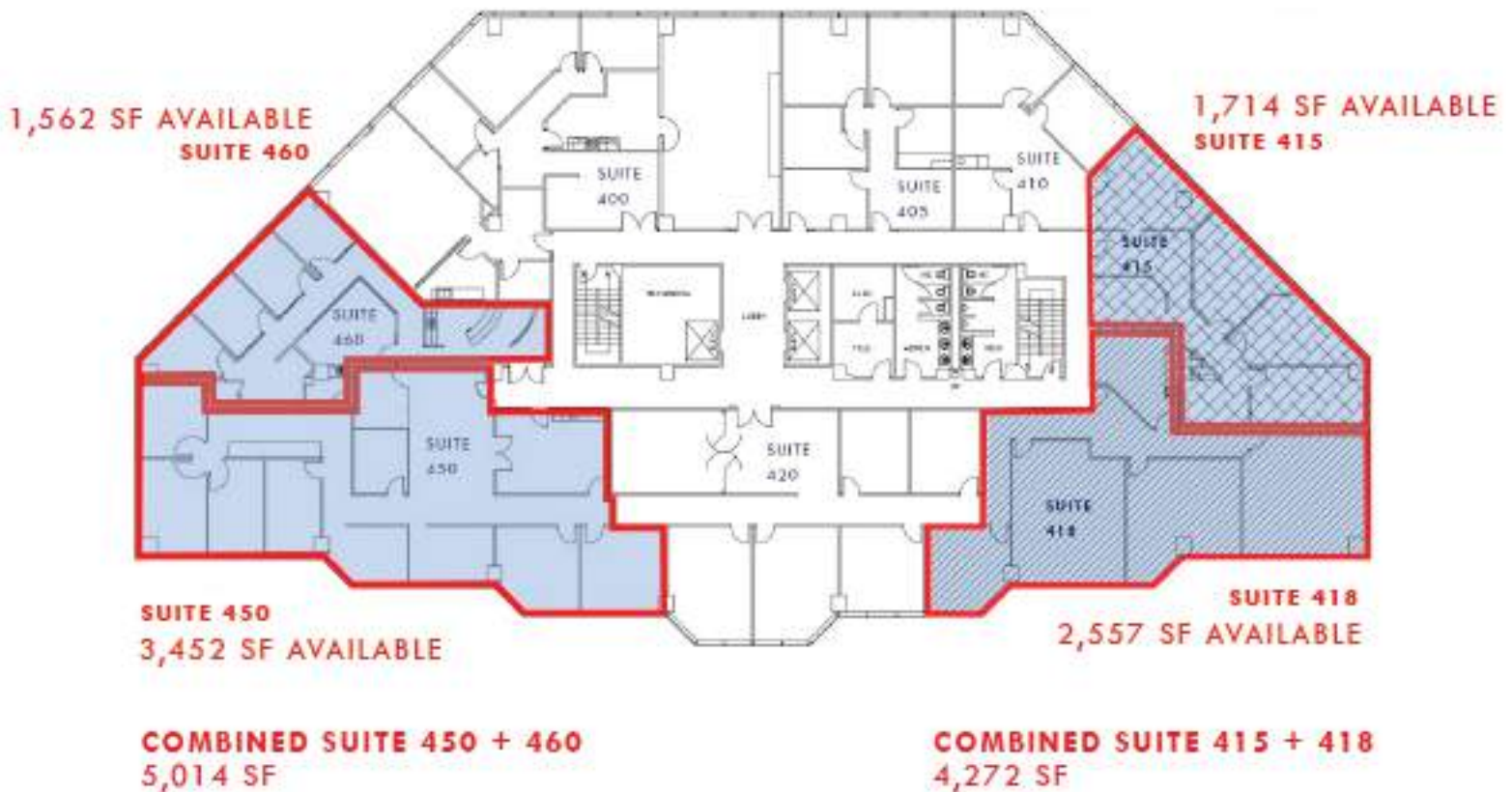
GRC PARK

FLOOR PLANS

CLASS "A" OFFICE SPACE FOR LEASE | GRC I

8801 S. Yale Ave. | Tulsa, Oklahoma 74137

**4TH
FLOOR**



FOR MORE INFORMATION:

Matt Mardis
Principal, Paine & Associates
918-481-5380 ext.13
matt@paine-associates.com

Phillips Breckinridge
Associate, Paine & Associates
918-629-6489
phillips@paine-associates.com

Brian Paine
Principal, Paine & Associates
918-481-5380 ext.12
brian@paine-associates.com

