



# VINEYARD ON MEMORIAL | LAND FOR SALE/LEASE

## LIFETIME FITNESS ANCHORED SHOPPING CENTER

7890 E. 106th Pl. S. Tulsa, OK 74133

### FOR MORE INFORMATION:

Matt Mardis  
Principal, Paine & Associates  
918-481-5380 ext.13  
matt@paine-associates.com

Garrett Mahaney  
Principal, Paine & Associates  
918-481-5380 ext.11  
garrett@paine-associates.com

Brian Paine  
Principal, Paine & Associates  
918-481-5380 ext.12  
brian@paine-associates.com

Phillips Breckinridge  
Sales Associate, Paine & Associates  
918-629-6489  
phillips@paine-associates.com



# SITE PLAN

LAND OR SALE/LEASE 3.9 ACRES +/-

PRICE \$22 PSF

## JOIN

SONA COFFEE  
SPORTS CLIPS  
T-MOBILE  
CRUMBL COOKIES  
MONTAG PHOTOGRAPHY  
IDA RED  
NOTHING BUNDT CAKES  
ANOINTED MED SPA  
MOMO'S CHOPHOUSE  
TULSA PREMIER DENTISTRY  
LEARNING EXPRESS TOYS  
TOKYO GARDEN  
INSIDE OUT CHIROPRACTIC  
FETCH  
TREYS BAR & GRILL

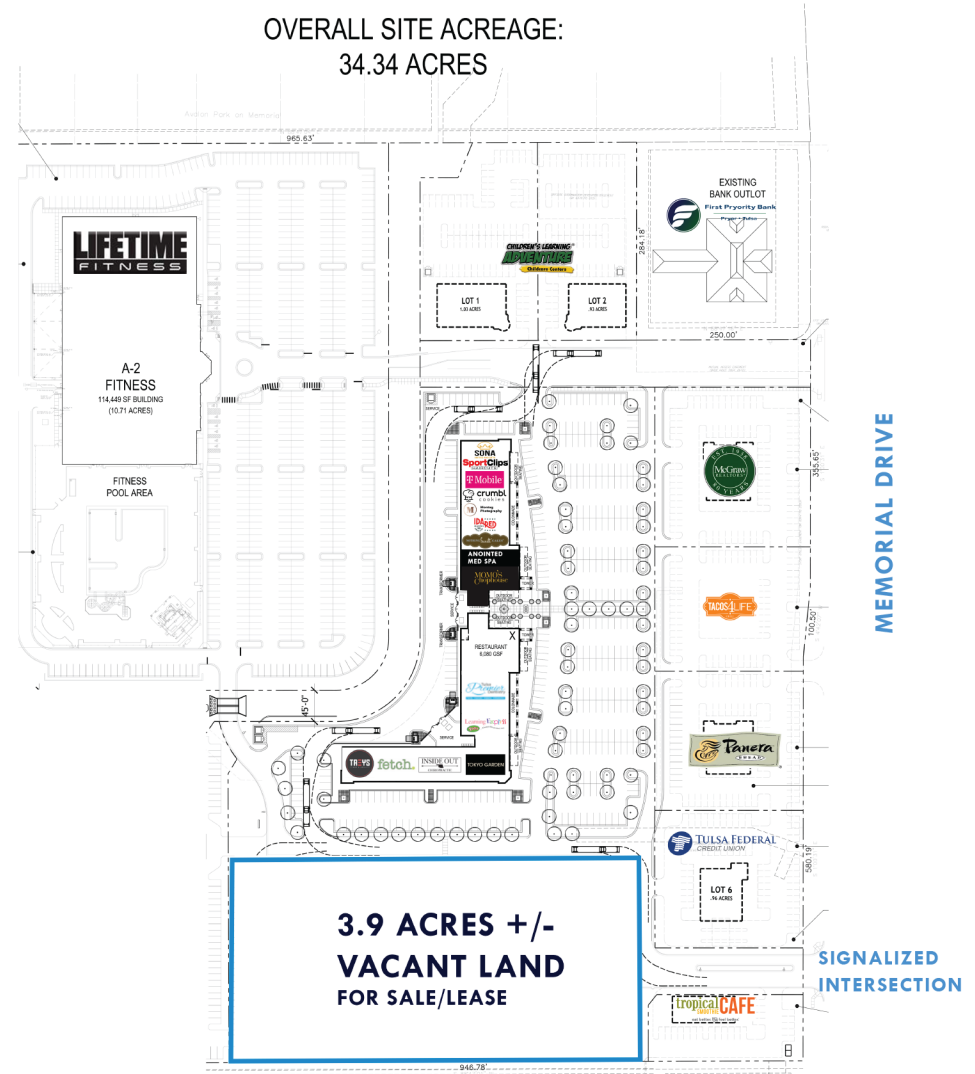
## TRAFFIC GENERATORS

54,200 CPD S. MEMORIAL DR.  
41,800 CPD CREEK TURNPIKE

## 509.7 K VISITS

LIFETIME FITNESS (placer.ai)

OVERALL SITE ACREAGE:  
34.34 ACRES



## FOR MORE INFORMATION:

Matt Mardis  
Principal, Paine & Associates  
918-481-5380 ext.13  
matt@paine-associates.com

Garrett Mahaney  
Principal, Paine & Associates  
918-481-5380 ext.11  
garrett@paine-associates.com

Brian Paine  
Principal, Paine & Associates  
918-481-5380 ext.12  
brian@paine-associates.com

Phillips Breckinridge  
Sales Associate, Paine & Associates  
918-629-6489  
phillips@paine-associates.com

