

DINE.SHOP.STAY.PLAY



RIVERWALK

JENKS CLASS A MIXED USE CENTER

RETAIL + OFFICE
SPACE AVAILABLE

OWNED & OPERATED BY



300 - 1100 RIVERWALK JENKS, OK 74037

FOR MORE INFORMATION:

Matt Mardis
Principal, Paine & Associates
918-481-5380 ext.13
matt@paine-associates.com

Garrett Mahaney
Principal, Paine & Associates
918-481-5380 ext.11
garrett@paine-associates.com

Brian Paine
Principal, Paine & Associates
918-481-5380 ext.12
brian@paine-associates.com

Phillips Breckinridge
Sales Associate, Paine & Associates
918-629-6489
phillips@paine-associates.com





CENTER DETAILS

Class A Mixed-Use, 2 Stories
66.41 Acres
91,467 SF GLA (Center)
37,613 SF GLA (Building)
30' Building Height
15' Ceiling Height
2004 Year Built, Renovated 2025
1,300 Parking Spaces

AMENITIES

Courtyard, Amphitheater
Waterfront
Air Conditioning
Recessed Lighting
NEW Public Restrooms
Storage Space
Monument & Pylon Signage

HIGHLIGHTS

After Hours Security
Riverfront Views
Local On-Site Management
NEW Playground,
Corn Hole, Pavillion
River Spirit Casino
Simon Outlet Mall
Oklahoma Aquarium
Jenks Public Schools
NOW OPEN Suite Shots



JOIN --- ANDOLINIS | BURN CO. BARBECUE | DISTRICT BURGER | LOS CABOS | MELTING POT | PINOT'S PALETTE | SCHOOL OF ROCK | SUITE SHOTS | THE SHE SHED | HBI INSURANCE | LUMIO DENTAL | MORTGAGE COMPANY | MUSCOGEE CREEK NATION | ONEFIRE | SHIELD LAW GROUP | TIGER LAW

300 - 1100 RIVERWALK JENKS, OK 74037

FOR MORE INFORMATION:

Matt Mardis
Principal, Paine & Associates
918-481-5380 ext.13
matt@paine-associates.com

Garrett Mahaney
Principal, Paine & Associates
918-481-5380 ext.11
garrett@paine-associates.com

Brian Paine
Principal, Paine & Associates
918-481-5380 ext.12
brian@paine-associates.com

Phillips Breckinridge
Sales Associate, Paine & Associates
918-629-6489
phillips@paine-associates.com



BLDG 300
SECOND FLOOR

BLDG 400
SECOND FLOOR



BLDG 600



BLDG 1000
SECOND FLOOR

BLDG 1100
SECOND FLOOR

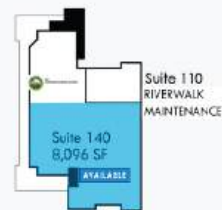


BLDG 300
FIRST FLOOR

BLDG 400
FIRST FLOOR



BLDG 500



BLDG 1000
FIRST FLOOR



BLDG 1100
FIRST FLOOR



RETAIL SPACE

Inline \$18.00 + \$6.89 NNN
Endcap \$20.00 + \$6.89 NNN

BLDG 400

5,832 SF | SUITE 180

BLDG 500

1,401 SF x SUITE 120, 125, 150, 155
1,401 SF | SUITE 160 COMING SOON
7,140 SF | SUITE 175 COMING SOON

400-500 +/- SF KIOSK

OFFICE SPACE

Inline \$16.00 + \$6.89 NNN
Endcap \$18.00 + \$6.89 NNN

BLDG 300

495 SF | SUITE 210
1,409 SF | SUITE 220
660 SF | SUITE 250

BLDG 400

2,397 SF | SUITE 200

BLDG 1000

8,096 SF SUITE 140

BLDG 1100

13,387 SF SUITE 100

300 - 1100 RIVERWALK JENKS, OK 74037

FOR MORE INFORMATION:

Matt Mardis
Principal, Paine & Associates
918-481-5380 ext.13
matt@paine-associates.com

Garrett Mahaney
Principal, Paine & Associates
918-481-5380 ext.11
garrett@paine-associates.com

Brian Paine
Principal, Paine & Associates
918-481-5380 ext.12
brian@paine-associates.com

Phillips Breckinridge
Sales Associate, Paine & Associates
918-629-6489
phillips@paine-associates.com



PAINE

COMMERCIAL REAL ESTATE

PAINE-ASSOCIATES.COM

LOCATED IN THE HEART OF THE RIVER DISTRICT, Riverwalk Crossing is South Tulsa's first major lifestyle center and inaugural riverfront development.

This mixed-use hub connects to the:

- Simon Outlet Mall
- Camp Pickle
- Oklahoma Aquarium
- Tulsa Riverparks Trail System
- Jenks High School
- River Spirit Casino & Margaritaville
- Main Street Jenks
- Riverside Drive.



OF VISITS (PLACER.AI)

870.7K VISITS

Riverwalk Crossing

337K VISITS

Oklahoma Aquarium

2M VISITS

River Spirit Casino

1.9M VISITS

Simon Tulsa Premium Outlets

	RIVERWALK	5 MINUTES	10 MINUTES	15 MINUTES
POPULATION		11,394	84,515	206,319
AVG HH INCOME		\$82,570	\$120,032	\$108,037
AVG AGE		35	38	39
		96th ST.	CREEK TRNPK	RIVERSIDE
TRAFFIC COUNTS		27,700 CPD	35,200 CPD	32,100 CPD

JENKS is one of America's Best Places to Live. --- Money Magazine

300 - 1100 RIVERWALK JENKS, OK 74037

FOR MORE INFORMATION:

Matt Mardis
Principal, Paine & Associates
918-481-5380 ext.13
matt@paine-associates.com

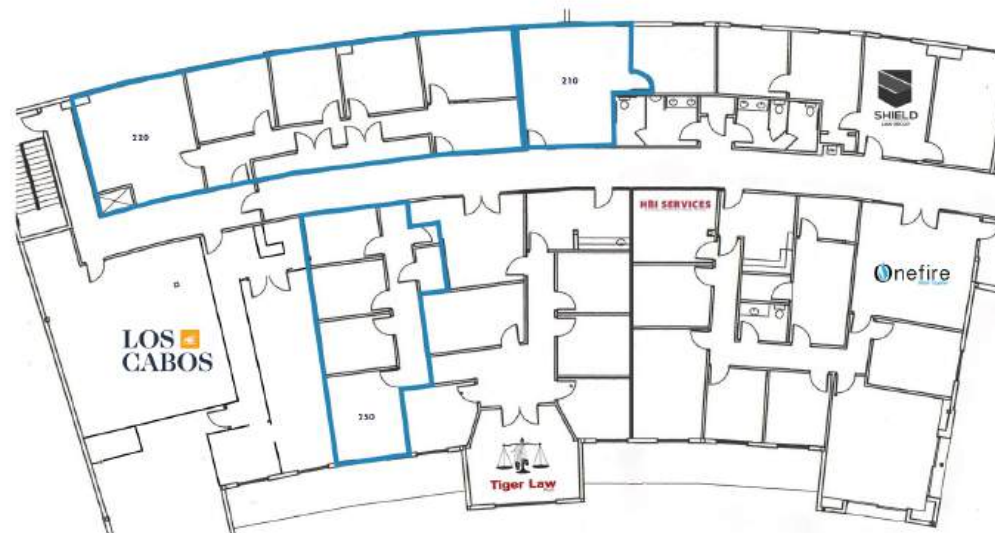
Garrett Mahaney
Principal, Paine & Associates
918-481-5380 ext.11
garrett@paine-associates.com

Brian Paine
Principal, Paine & Associates
918-481-5380 ext.12
brian@paine-associates.com

Phillips Breckinridge
Sales Associate, Paine & Associates
918-629-6489
phillips@paine-associates.com



- 495 SF SUITE 210
- 1,409 SF SUITE 220
- 660 SF SUITE 250



300 - 1100 RIVERWALK JENKS, OK 74037

FOR MORE INFORMATION:

Matt Mardis
Principal, Paine & Associates
918-481-5380 ext.13
matt@paine-associates.com

Garrett Mahaney
Principal, Paine & Associates
918-481-5380 ext.11
garrett@paine-associates.com

Brian Paine
Principal, Paine & Associates
918-481-5380 ext.12
brian@paine-associates.com

Phillips Breckinridge
Sales Associate, Paine & Associates
918-629-6489
phillips@paine-associates.com



SUITE 200

BLDG 400

1ST FLOOR RETAIL

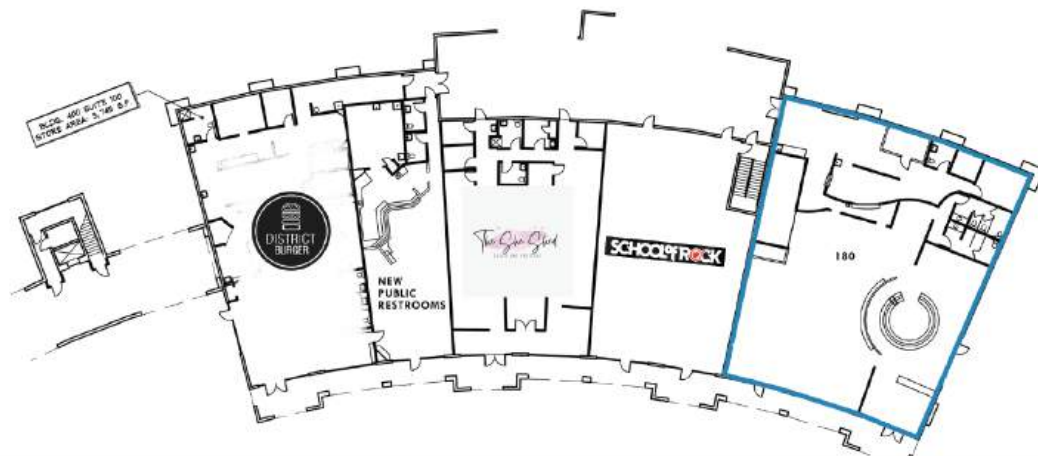
2ND FLOOR OFFICE



SUITE 180



- 5,832 SF SUITE 180
- 2,397 SF SUITE 200 (FLOOR PLAN UNAVAILABLE)



300 - 1100 RIVERWALK JENKS, OK 74037

FOR MORE INFORMATION:

Matt Mardis
Principal, Paine & Associates
918-481-5380 ext.13
matt@paine-associates.com

Garrett Mahaney
Principal, Paine & Associates
918-481-5380 ext.11
garrett@paine-associates.com

Brian Paine
Principal, Paine & Associates
918-481-5380 ext.12
brian@paine-associates.com

Phillips Breckinridge
Sales Associate, Paine & Associates
918-629-6489
phillips@paine-associates.com



- 1,401 SF SF SUITE 120, 125, 150, 175
- 400-500 +/- SF KIOSK



300 - 1100 RIVERWALK JENKS, OK 74037

FOR MORE INFORMATION:

Matt Mardis
Principal, Paine & Associates
918-481-5380 ext.13
matt@paine-associates.com

Garrett Mahaney
Principal, Paine & Associates
918-481-5380 ext.11
garrett@paine-associates.com

Brian Paine
Principal, Paine & Associates
918-481-5380 ext.12
brian@paine-associates.com

Phillips Breckinridge
Sales Associate, Paine & Associates
918-629-6489
phillips@paine-associates.com



SUITE SHOTS - NOW OPEN

Suite Shots Jenks, the highly anticipated premiere golf entertainment facility located at the Jenks Riverwalk, opened its doors to the community on April 17. The facility will feature high-tech, climate-controlled golf simulation bays, a restaurant with a full-scale menu and catering, first-floor gaming area, and private event rooms and bars.

Suite Shots was founded in 2019 and is headquartered in Fargo, North Dakota. Suite Shots focuses on exceptional service, family-friendly activities and community partnerships.

Suite Shots Jenks offers a variety of amenities for guests of all ages and skill levels including a full-service restaurant, learn-to-play programs, and three premier event rooms available for reservations. Guests can anticipate exceptional food and beverage options, including dishes prepared in a scratch kitchen featuring unique menu items created with input from local and regional sources.

"We're incredibly proud to open our doors in Jenks and become part of this vibrant community," said Chuck Johnson, Chief Operating Officer of Suite Shots. "Suite Shots was built with families, friends, and community in mind — a place where everyone can come together, connect, and have fun. We're excited to create lasting memories with our neighbors in Jenks and across the Tulsa area."

In addition to a state-of-the-art driving range, the venue features a dedicated gaming area with 35 gaming machines. As a convenient amenity for golfers and visitors, a kiosk/ATM is available on-site for quick and easy cash-out, enhancing the overall experience.

300 - 1100 RIVERWALK JENKS, OK 74037

FOR MORE INFORMATION:

Matt Mardis
Principal, Paine & Associates
918-481-5380 ext.13
matt@paine-associates.com

Garrett Mahaney
Principal, Paine & Associates
918-481-5380 ext.11
garrett@paine-associates.com

Brian Paine
Principal, Paine & Associates
918-481-5380 ext.12
brian@paine-associates.com

Phillips Breckinridge
Sales Associate, Paine & Associates
918-629-6489
phillips@paine-associates.com


PAINE
COMMERCIAL REAL ESTATE
PAINE-ASSOCIATES.COM



SUITE 140



- 8,096 SF SUITE 140



300 - 1100 RIVERWALK JENKS, OK 74037

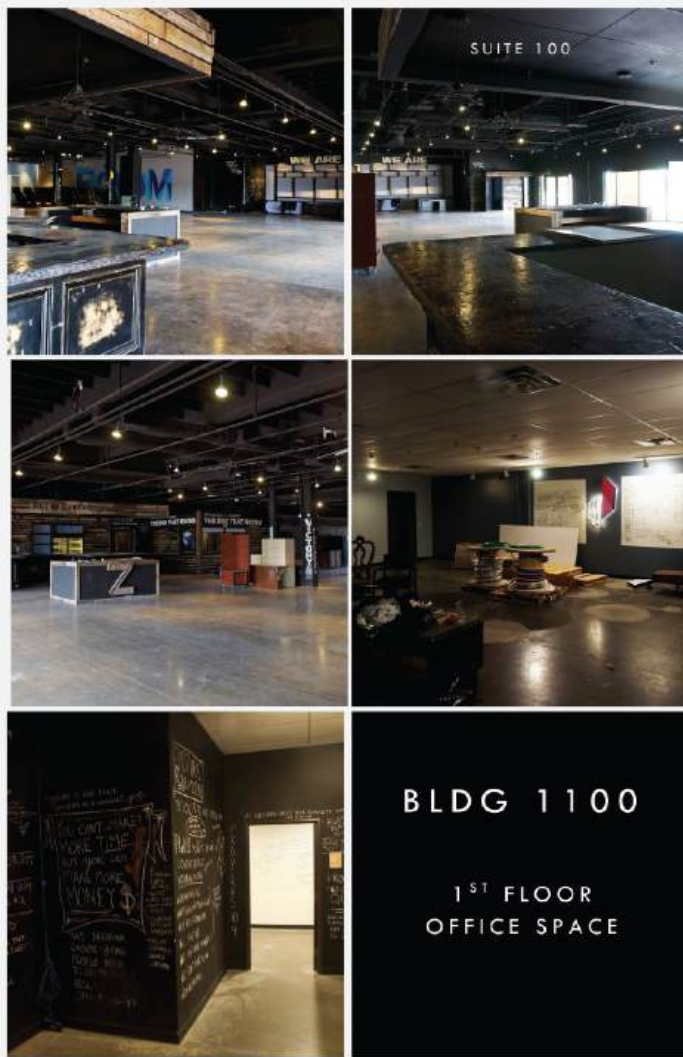
FOR MORE INFORMATION:

Matt Mardis
Principal, Paine & Associates
918-481-5380 ext.13
matt@paine-associates.com

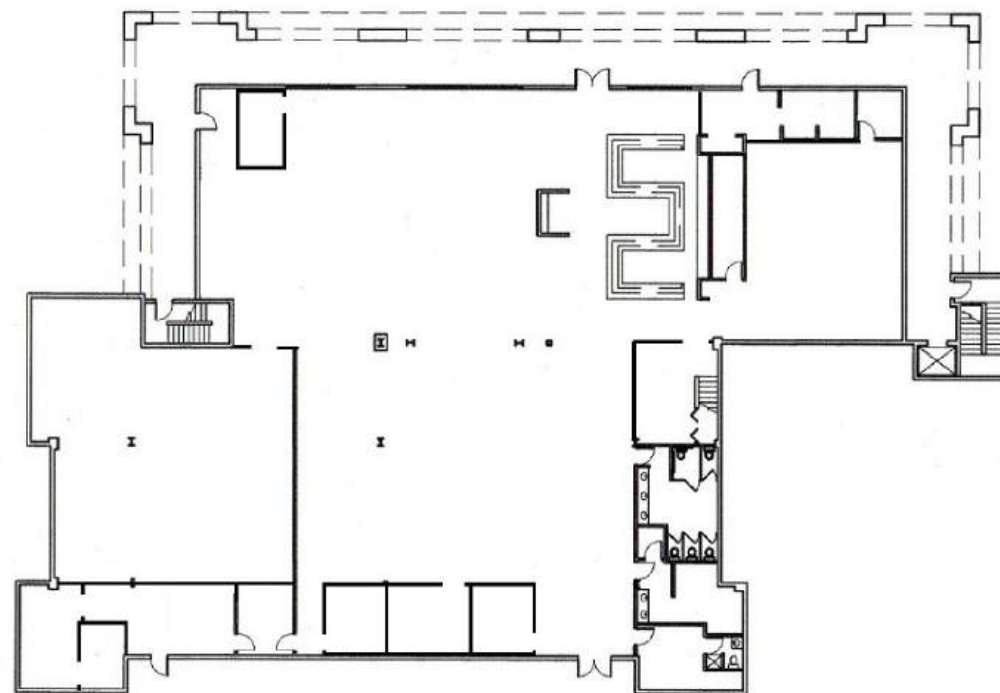
Garrett Mahaney
Principal, Paine & Associates
918-481-5380 ext.11
garrett@paine-associates.com

Brian Paine
Principal, Paine & Associates
918-481-5380 ext.12
brian@paine-associates.com

Phillips Breckinridge
Sales Associate, Paine & Associates
918-629-6489
phillips@paine-associates.com



- 13,387 SF SUITE 100



300 - 1100 RIVERWALK JENKS, OK 74037

FOR MORE INFORMATION:

Matt Mardis
Principal, Paine & Associates
918-481-5380 ext.13
matt@paine-associates.com

Garrett Mahaney
Principal, Paine & Associates
918-481-5380 ext.11
garrett@paine-associates.com

Brian Paine
Principal, Paine & Associates
918-481-5380 ext.12
brian@paine-associates.com

Phillips Breckinridge
Sales Associate, Paine & Associates
918-629-6489
phillips@paine-associates.com

FEATURES



KIOSK



PLAYGROUND



ARTWORK



AMPHITHEATER

RIVERWALK EVENTS

Riverwalk offers and hosts numerous community events throughout the year. With riverfront views, ample parking, amphitheater, and playground, this location serves the Jenks and Tulsa Metropolitan Area community. Thanks to the Muscogee Creek Nation, "In late 2024, the Muscogee Nation National Council approved an \$8.5 million improvement plan for both Suite Shots and Jenks Riverwalk property. Part of this plan, Rainier Companies and the Jenks Riverwalk are implementing new public restrooms, parking lot improvements, an interactive water feature, façade updates and more."

EVENTS

- RIVERWALK MARKET
- SUMMER CONCERT SERIES
- RIVERWALK POP!
- ANDOLINI'S PINT NIGHTS
- PINOT'S PALETTE PAINTING EVENTS/CLASSES
- RIVERWALK HOLIDAY FESTIVITIES
- MELTING POT PROMO EVENTS
- MOVIE NIGHTS
- RUN FOR HOPE SOBRIETY SPRINT
- WOOFSTOCK
- BOOMFEST

300 - 1100 RIVERWALK JENKS, OK 74037

FOR MORE INFORMATION:

Matt Mardis
Principal, Paine & Associates
918-481-5380 ext.13
matt@paine-associates.com

Garrett Mahaney
Principal, Paine & Associates
918-481-5380 ext.11
garrett@paine-associates.com

Brian Paine
Principal, Paine & Associates
918-481-5380 ext.12
brian@paine-associates.com

Phillips Breckinridge
Sales Associate, Paine & Associates
918-629-6489
phillips@paine-associates.com