

DINE.SHOP.STAY.PLAY



# RIVERWALK

JENKS

CLASS A

MIXED USE

CENTER

RETAIL + OFFICE  
SPACE AVAILABLE

OWNED & OPERATED BY



300 - 1100 RIVERWALK JENKS, OK 74037

FOR MORE INFORMATION:

Matt Mardis  
Principal, Paine & Associates  
918-481-5380 ext.13  
matt@paine-associates.com

Garrett Mahaney  
Principal, Paine & Associates  
918-481-5380 ext.11  
garrett@paine-associates.com

Jason Wiltshire  
Associate, Paine & Associates  
918-710-1122  
jason@paine-associates.com

Phillips Breckinridge  
Sales Associate, Paine & Associates  
918-629-6489  
phillips@paine-associates.com





## CENTER DETAILS

Class A Mixed-Use, 2 Stories  
66.41 Acres  
91,467 SF GLA (Center)  
37,613 SF GLA (Building)  
30' Building Height  
15' Ceiling Height  
2004 Year Built, Renovated 2025  
1,300 Parking Spaces

## AMENITIES

Courtyard, Amphitheater  
Waterfront  
Air Conditioning  
Recessed Lighting  
**NEW** Public Restrooms  
Storage Space  
Monument & Pylon Signage

## HIGHLIGHTS

After Hours Security  
Riverfront Views  
Local On-Site Management  
**NEW** Playground,  
Corn Hole, Pavillion  
River Spirit Casino  
Simon Outlet Mall  
Oklahoma Aquarium  
Jenks Public Schools  
**NOW OPEN** Suite Shots



JOIN --- ANDOLINI'S | BURN CO. BARBEQUE | DISTRICT BURGER | LOS CABOS | MELTING POT | PINOT'S PALETTE | SCHOOL OF ROCK | SUITE SHOTS | THE SHE SHED | HBI INSURANCE | LUMIO DENTAL | MUSCOGEE CREEK NATION | ONEFIRE | SHIELD LAW GROUP | TIGER LAW

300 - 1100 RIVERWALK JENKS, OK 74037

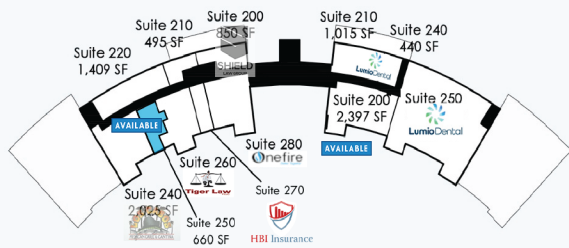
## FOR MORE INFORMATION:

Matt Mardis  
Principal, Paine & Associates  
918-481-5380 ext.13  
matt@paine-associates.com

Garrett Mahaney  
Principal, Paine & Associates  
918-481-5380 ext.11  
garrett@paine-associates.com

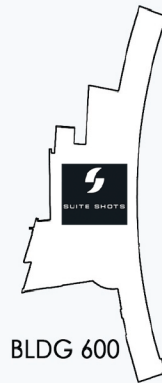
Jason Wiltshire  
Associate, Paine & Associates  
918-710-1122  
jason@paine-associates.com

Phillips Breckinridge  
Sales Associate, Paine & Associates  
918-629-6489  
phillips@paine-associates.com

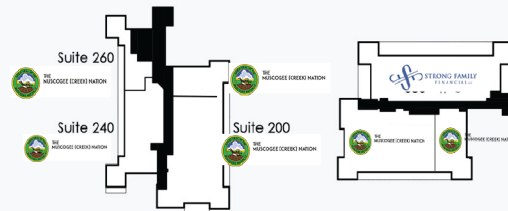


BLDG 300  
SECOND FLOOR

BLDG 400  
SECOND FLOOR



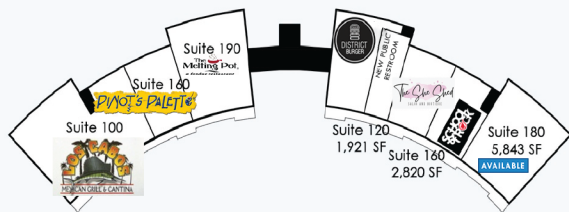
BLDG 600



BLDG 1000  
SECOND FLOOR

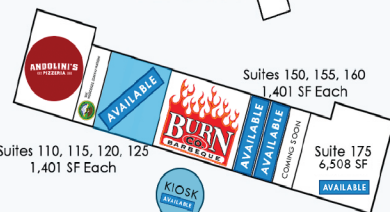


BLDG 1100  
SECOND FLOOR



BLDG 300  
FIRST FLOOR

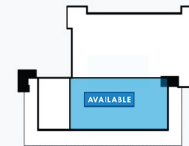
BLDG 400  
FIRST FLOOR



BLDG 500



BLDG 1000  
FIRST FLOOR



BLDG 1100  
FIRST FLOOR



## RETAIL SPACE

Inline \$18.00 + \$6.89 NNN  
Endcap \$20.00 + \$6.89 NNN

## BLDG 400

5,832 SF | SUITE 180

## BLDG 500

1,401 SF x SUITE 120, 125, 150, 155  
1,401 SF | SUITE 160 COMING SOON  
7,140 SF | SUITE 175 COMING SOON

400-500 +/- SF KIOSK

## OFFICE SPACE

Inline \$18.00 + \$6.89 NNN  
Endcap \$22.00 + \$6.89 NNN

## BLDG 300

495 SF | SUITE 210  
1,409 SF | SUITE 220  
660 SF | SUITE 250

## BLDG 400

2,397 SF | SUITE 200

## BLDG 1000

8,096 SF SUITE 140

## BLDG 1100

8,307 SF SUITE 100

300 - 1100 RIVERWALK JENKS, OK 74037

FOR MORE INFORMATION:

Matt Mardis  
Principal, Paine & Associates  
918-481-5380 ext.13  
matt@paine-associates.com

Garrett Mahaney  
Principal, Paine & Associates  
918-481-5380 ext.11  
garrett@paine-associates.com

Jason Wiltshire  
Associate, Paine & Associates  
918-710-1122  
jason@paine-associates.com

Phillips Breckinridge  
Sales Associate, Paine & Associates  
918-629-6489  
phillips@paine-associates.com

**P A I N E**

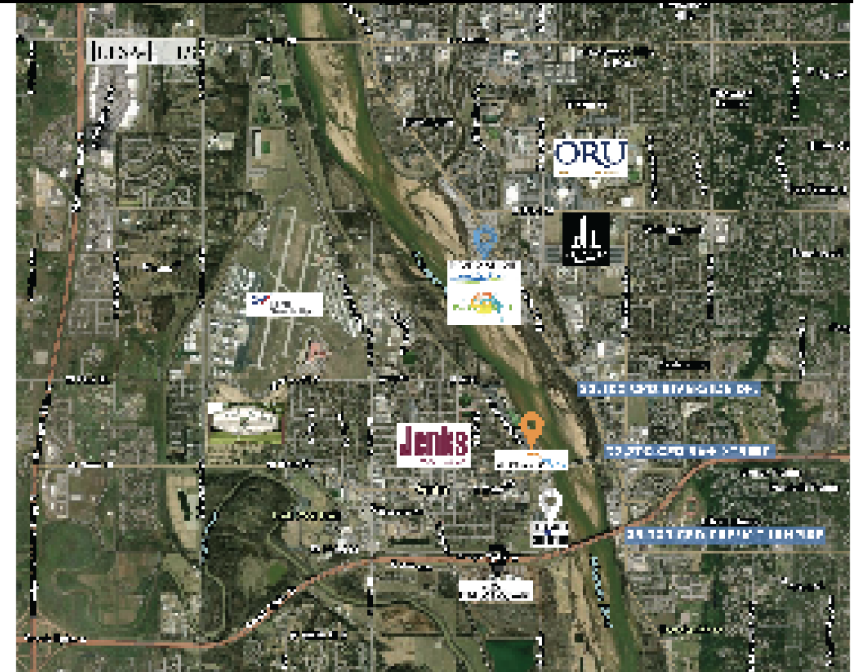
COMMERCIAL REAL ESTATE

PAINE-ASSOCIATES.COM

**LOCATED IN THE HEART OF THE RIVER DISTRICT**, Riverwalk Crossing is South Tulsa's first major lifestyle center and inaugural riverfront development.

This mixed-use hub connects to the:

- Simon Outlet Mall
- Camp Pickle
- Oklahoma Aquarium
- Tulsa Riverparks Trail System
- Jenks High School
- River Spirit Casino & Margaritaville
- Main Street Jenks
- Riverside Drive.



**# OF VISITS** (PLACER.AI)

**912.5 K VISITS**

Riverwalk Crossing

**340.8 K VISITS**

Oklahoma Aquarium

**2 M VISITS**

River Spirit Casino

**2.3 M VISITS**

Simon Tulsa Premium Outlets

RIVERWALK	5 MINUTES	10 MINUTES	15 MINUTES
POPULATION	11,394	84,515	206,319
AVG HH INCOME	\$82,570	\$120,032	\$108,037
AVG AGE	35	38	39
	96th ST.	CREEK TRNPK	RIVERSIDE
TRAFFIC COUNTS	27,700 CPD	35,200 CPD	32,100 CPD

**JENKS is one of America's Best Places to Live.** --- Money Magazine

300 - 1100 RIVERWALK JENKS, OK 74037

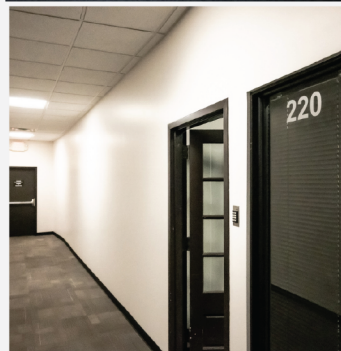
**FOR MORE INFORMATION:**

Matt Mardis  
Principal, Paine & Associates  
918-481-5380 ext.13  
matt@paine-associates.com

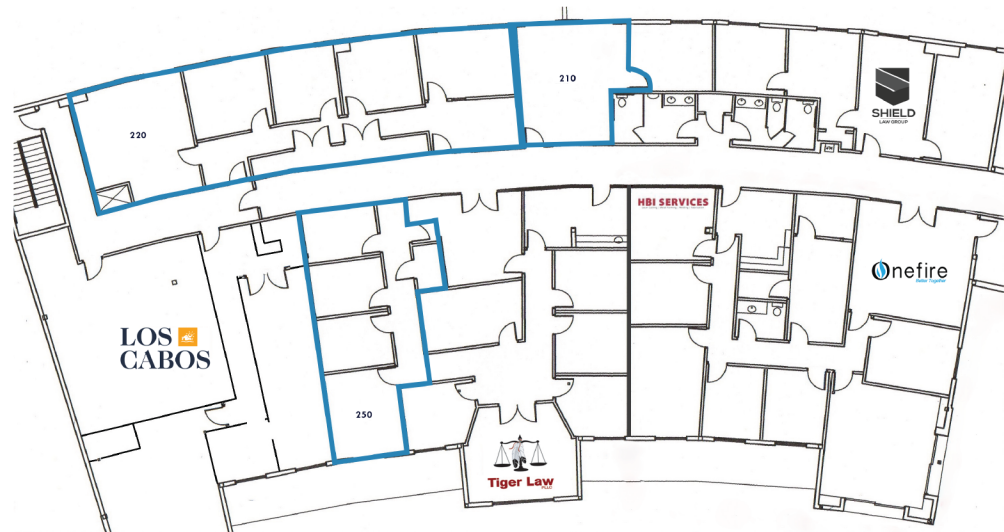
Garrett Mahaney  
Principal, Paine & Associates  
918-481-5380 ext.11  
garrett@paine-associates.com

Jason Wiltshire  
Associate, Paine & Associates  
918-710-1122  
jason@paine-associates.com

Phillips Breckinridge  
Sales Associate, Paine & Associates  
918-629-6489  
phillips@paine-associates.com



- 495 SF SUITE 210
- 1,409 SF SUITE 220
- 660 SF SUITE 250



300 - 1100 RIVERWALK JENKS, OK 74037

FOR MORE INFORMATION:

Matt Mardis  
Principal, Paine & Associates  
918-481-5380 ext.13  
matt@paine-associates.com

Garrett Mahaney  
Principal, Paine & Associates  
918-481-5380 ext.11  
garrett@paine-associates.com

Jason Wiltshire  
Associate, Paine & Associates  
918-710-1122  
jason@paine-associates.com

Phillips Breckinridge  
Sales Associate, Paine & Associates  
918-629-6489  
phillips@paine-associates.com



SUITE 200

## BLDG 400

1<sup>ST</sup> FLOOR RETAIL

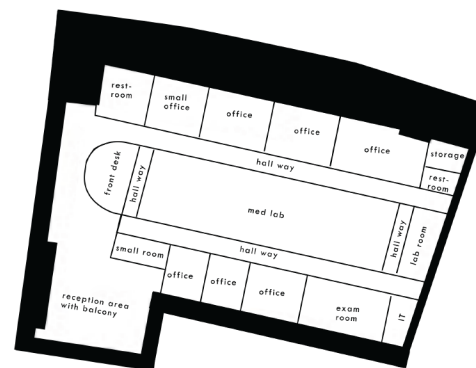
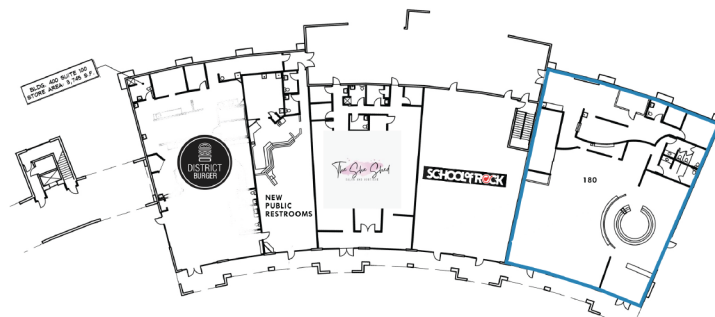
2<sup>ND</sup> FLOOR OFFICE



SUITE 180



- 5,832 SF SUITE 180
- 2,397 SF SUITE 200



300 - 1100 RIVERWALK JENKS, OK 74037

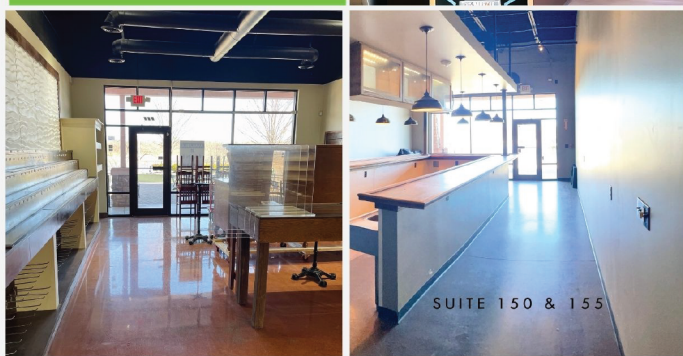
### FOR MORE INFORMATION:

Matt Mardis  
Principal, Paine & Associates  
918-481-5380 ext.13  
matt@paine-associates.com

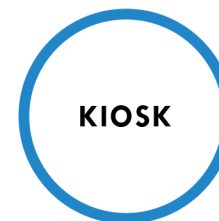
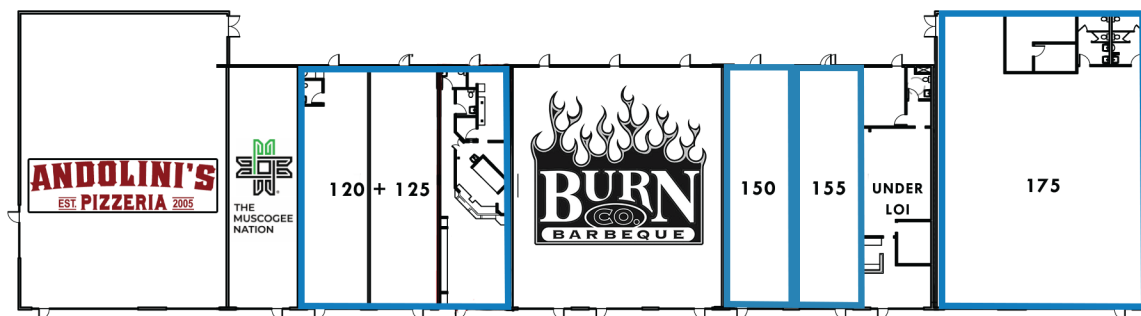
Garrett Mahaney  
Principal, Paine & Associates  
918-481-5380 ext.11  
garrett@paine-associates.com

Jason Wiltshire  
Associate, Paine & Associates  
918-710-1122  
jason@paine-associates.com

Phillips Breckinridge  
Sales Associate, Paine & Associates  
918-629-6489  
phillips@paine-associates.com



- 1,401 SF SF SUITE 120+125, 150, 155, 175
- 400-500 +/- SF KIOSK



300 - 1100 RIVERWALK JENKS, OK 74037

FOR MORE INFORMATION:

Matt Mardis  
Principal, Paine & Associates  
918-481-5380 ext.13  
matt@paine-associates.com

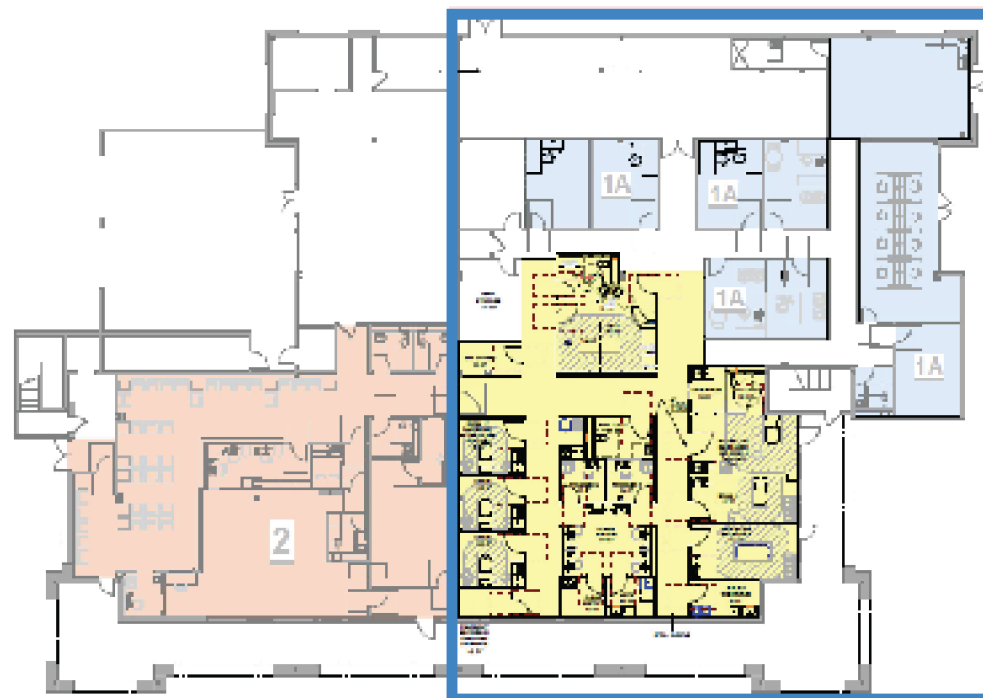
Garrett Mahaney  
Principal, Paine & Associates  
918-481-5380 ext.11  
garrett@paine-associates.com

Jason Wiltshire  
Associate, Paine & Associates  
918-710-1122  
jason@paine-associates.com

Phillips Breckinridge  
Sales Associate, Paine & Associates  
918-629-6489  
phillips@paine-associates.com



- 8,096 SF SUITE 140



300 - 1100 RIVERWALK JENKS, OK 74037

FOR MORE INFORMATION:

Matt Mardis  
Principal, Paine & Associates  
918-481-5380 ext.13  
matt@paine-associates.com

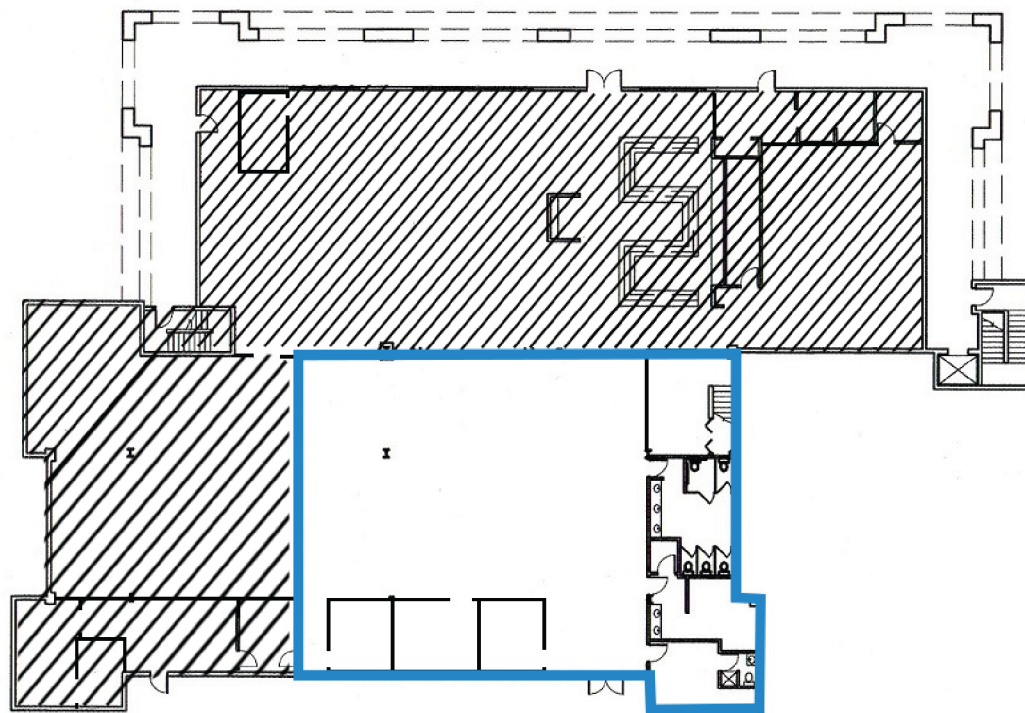
Garrett Mahaney  
Principal, Paine & Associates  
918-481-5380 ext.11  
garrett@paine-associates.com

Jason Wiltshire  
Associate, Paine & Associates  
918-710-1122  
jason@paine-associates.com

Phillips Breckinridge  
Sales Associate, Paine & Associates  
918-629-6489  
phillips@paine-associates.com



- 8,307 SF SUITE 100



300 - 1100 RIVERWALK JENKS, OK 74037

FOR MORE INFORMATION:

Matt Mardis  
Principal, Paine & Associates  
918-481-5380 ext.13  
matt@paine-associates.com

Garrett Mahaney  
Principal, Paine & Associates  
918-481-5380 ext.11  
garrett@paine-associates.com

Jason Wiltshire  
Associate, Paine & Associates  
918-710-1122  
jason@paine-associates.com

Phillips Breckinridge  
Sales Associate, Paine & Associates  
918-629-6489  
phillips@paine-associates.com



## SUITE SHOTS - NOW OPEN

Suite Shots Jenks, the highly anticipated premiere golf entertainment facility located at the Jenks Riverwalk, opened its doors to the community on April 17. The facility will feature high-tech, climate-controlled golf simulation bays, a restaurant with a full-scale menu and catering, first-floor gaming area, and private event rooms and bars.

Suite Shots was founded in 2019 and is headquartered in Fargo, North Dakota. Suite Shots focuses on exceptional service, family-friendly activities and community partnerships.

Suite Shots Jenks offers a variety of amenities for guests of all ages and skill levels including a full-service restaurant, learn-to-play programs, and three premier event rooms available for reservations. Guests can anticipate exceptional food and beverage options, including dishes prepared in a scratch kitchen featuring unique menu items created with input from local and regional sources.

"We're incredibly proud to open our doors in Jenks and become part of this vibrant community," said Chuck Johnson, Chief Operating Officer of Suite Shots. "Suite Shots was built with families, friends, and community in mind — a place where everyone can come together, connect, and have fun. We're excited to create lasting memories with our neighbors in Jenks and across the Tulsa area."

In addition to a state-of-the-art driving range, the venue features a dedicated gaming area with 35 gaming machines. As a convenient amenity for golfers and visitors, a kiosk/ATM is available on-site for quick and easy cash-out, enhancing the overall experience.

300 - 1100 RIVERWALK JENKS, OK 74037

### FOR MORE INFORMATION:

Matt Mardis  
Principal, Paine & Associates  
918-481-5380 ext.13  
matt@paine-associates.com

Garrett Mahaney  
Principal, Paine & Associates  
918-481-5380 ext.11  
garrett@paine-associates.com

Jason Wiltshire  
Associate, Paine & Associates  
918-710-1122  
jason@paine-associates.com

Phillips Breckinridge  
Sales Associate, Paine & Associates  
918-629-6489  
phillips@paine-associates.com

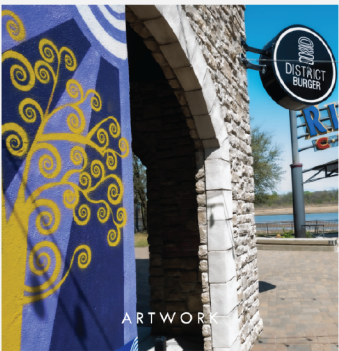
## FEATURES



KIOSK



PLAYGROUND



ARTWORK



AMPHITHEATER

## RIVERWALK EVENTS

Riverwalk offers and hosts numerous community events throughout the year. With riverfront views, ample parking, amphitheater, and playground, this location serves the Jenks and Tulsa Metropolitan Area community. Thanks to the Muscogee Creek Nation, "In late 2024, the Muscogee Nation National Council approved an \$8.5 million improvement plan for both Suite Shots and Jenks Riverwalk property. Part of this plan, Rainier Companies and the Jenks Riverwalk are implementing new public restrooms, parking lot improvements, an interactive water feature, façade updates and more."

## EVENTS

- RIVERWALK MARKET
- SUMMER CONCERT SERIES
- RIVERWALK POP!
- ANDOLINI'S PINT NIGHTS
- PINOT'S PALETTE PAINTING EVENTS/CLASSES
- RIVERWALK HOLIDAY FESTIVITIES
- MELTING POT PROMO EVENTS
- MOVIE NIGHTS
- RUN FOR HOPE SOBRIETY SPRINT
- WOOFSTOCK
- BOOMFEST

300 - 1100 RIVERWALK JENKS, OK 74037

## FOR MORE INFORMATION:

Matt Mardis  
Principal, Paine & Associates  
918-481-5380 ext.13  
matt@paine-associates.com

Garrett Mahaney  
Principal, Paine & Associates  
918-481-5380 ext.11  
garrett@paine-associates.com

Jason Wiltshire  
Associate, Paine & Associates  
918-710-1122  
jason@paine-associates.com

Phillips Breckinridge  
Sales Associate, Paine & Associates  
918-629-6489  
phillips@paine-associates.com